

DIARY

GEAS EVENTS

GEAS Major June Exhibition, Glen Eira Town Hall Gallery, June 18–July 13

- Apr 21** Closing date for entries
- May 15** Photograph of entry due
- Jun 15** Artworks to be delivered to collection point
- Jun 18** Exhibition Opening
- July 13** Artists to collect work

GEAS Spring Exhibition at Breslin Gallery

Details to follow

GEAS Members Paint in the Park

- Nov 9** Paint in the Park
- Dec 2-14** Exhibition opens, Glen Eira Town Hall Gallery Annexe

GEAS CLASSES/ACTIVITIES

Life Drawing is held on Mondays.
Figurative Art is held on Tuesdays.
Portraiture Group is held on the third Wednesday of every month.
Contact: Pam Andrews 0405 722 750
pjandrews42@bigpond.com

GEAS TERM DATES 2014

Figurative Art (Tuesdays)

- Term 2:** 2 Apr – 24 Jun (10 weeks)
- Term 3:** 15 Jul – 16 Sep (10 weeks)
- Term 4:** 7 Oct – 16 Dec (10 weeks)

*4th Nov Cup Day no class

*All other holidays fall during breaks

GEAS TERM DATES 2014

Life Drawing (Mondays)

- Term 2:** 28 Apr – 23 Jun (8 weeks)
- *9th June Queen's Birthday no class
- Term 3:** 14 Jul – 15 Sep (10 weeks)
- Term 4:** 6 Oct – 1 or 15 Dec (9-11 wks)

SHARING YOUR ART NEWS

Members, please remember to let us know where and when you are exhibiting or any special information which can be shared with fellow members of the Society.
Heather, Administrator, GEAS

GEAS MEMBER NEWS

We welcome the GEAS readership back to the GEAS e-news after a summer break, with the Autumn edition. Classes have run as usual from January to April, with some exciting developments in our activities, to which we welcome new members.

Our e-news will now also be available on line, to facilitate member access to our events.

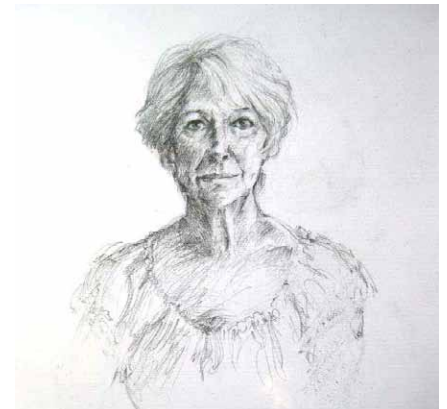
Innovations for 2014 include an extension of the **Mentoring Program**, for which we thank Wade Gregory Clarke and Pam Andrews for their invaluable input to the Art Practice of GEAS members, in the lead up to our **First Main GEAS Members Exhibition** to be held in June (see more details under Exhibition News)

Tuesday Figurative Art has commenced 2014 with extended poses, by popular demand, covering 3 weeks. A further innovation is the rotation of three new tutors to the Figurative Art Group while regular tutor Keming Shen is on leave: Peter Roccella, Gui Hua Li, Pam Andrews. By popular demand extended poses are now routine in this group.

Life Drawing Mondays has had some tremendous models with extremely dynamic poses. Weekly chat includes sharing of art books on techniques, thanks to Jennifer Hopper. Two tutored sessions a term are now a routine addition to the agenda.

The **en plein air group**, led by Brenda Chan and Kerrin Edmunds met in January for a seaside sketch looking back at the city of Melbourne, followed by lunch. The February session was cancelled due to hot weather.

Portraiture Group continues to meet as usual on the third Wednesday of the month on a rotating venue roster. Portrait by Pam Andrews the convenor.



Above:
Portraiture Group continued to meet over the summer under the direction of Pam Andrews. Thank you to Kerrin for organising the sitter and hosting the day. Portrait by Pam Andrews.

Left:
With regular tutor Keming Shen on leave, GEAS Web Manager, artist Peter Roccella tutors the Tuesday Figurative Art Group on composition and quick strategies for obtaining correct perspective in Life Drawing: April 1, 2014



MORE MEMBER NEWS

Art Works by GEAS Members Angeline Bartholomeusz, Kate Birrell and Peter Edgeley were selected for the Mornington Art Show
www.morningtonartshow.com.au/gallery

Angeline Bartholomeusz and Donna Sceney exhibited at the A4 Exhibition at Herring Island.

Congratulations to Wade Gregory Clark on the birth of his second daughter, Chantilly Willow.

Our thoughts are with Esther Lewis and Lilian Weinberg for the health issues they are currently facing.

MEMORIES 2013

The Foundation Group that established GEAS gathered at Lilian's on Oct 27, 2013, along with some newer members to GEAS.

Right:

The Foundation Group of the Glen Eira Artists Society plus tutor Keming Shen, Rotary Administrator Heather Welsh, and newer members.

EXHIBITIONS

We are pleased to announce the opportunity for three exhibition spaces in 2014:

- 1 Glen Eira Town Hall Gallery** for the First Major GEAS members Exhibition (June 19-July 13, see details below)
- 2 The Breslin Gallery** for a September Exhibition(details t.b.n.)
- 3 Glen Eira Town Hall Gallery Annexe** for a GEAS members only Paint in the Park Day (November 9) Exhibiton (Dec 2-14)



GEAS JUNE EXHIBITON

Applications are now available for the First "GEAS Members Exhibition" to be held in June-July at the City of Glen Eira Gallery. Contact Heather at glenart2@gmail.com or Regina at renadata@hotmail.com. Cost \$25 per work entered. First entry guaranteed, second or third entries by selection committee.

- April 21** Entries close for June-July GEAS Members First Major Exhibition
- May 15** Photograph of your entries to be forwarded to gbschofi@optusnet.com.au or contact this address to arrange a photograph to be taken
- June 1** Selection panel makes choices of second or third works for exhibition
- June 15** Art works to be delivered to collection point
- June 16** Art works delivered to gallery
- June 18** Exhibition Opening by the Mayor of the City of Glen Eira
- June 19- July 13** Exhibition Glen Eira Town hall Gallery
- July 13** Members collect work from Gallery

Preparation for June Exhibition has led to the evolution of a program of **Mentoring sessions:**

Feb 1 –Thank you to Wade Gregory Clark for a very informative and constructive session on basic Art principles of composition and critique, and artistic feedback to the participants. It was an excellent beginning to our mentoring program.

March 1 – Mentor Pam Andrews provided some punchy home truths about the making of art with positive feedback to all participants, at Fresh Art Café Studio.

April 5 – A very successful and informative session led by Wade Gregory Clark, was held at The Meeting Hub, Bendigo Bank Murrumbena, where artists brought along their own work for discussion and feedback.



Mentoring session with Wade Gregory Clark at Mary Neighbour's Fresh Art and Café studio space



Mentoring session with Pam Andrews at Mary Neighbour's Fresh Art and Café studio space



Mentoring session with Wade Gregory Clark at The Meeting Hub Murrumbena

GLEN EIRA ARTISTS SOCIETY

gleneiraartistsociety.org

info@gleneiraartistsociety.org

E-NEWS

Tel: 0402 349 131

AUTUMN 2014

ABN 72 436 357 743

Reg no. A0053616G



Glen Eira Artists Society