

Glen Eira Artists Society

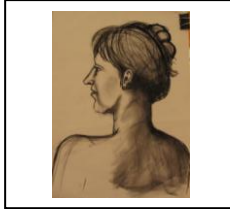
Newsletter, March 2013

March Events @GEAS

Bring a friend for a trial session.
New members welcome.

Life Drawing Mondays

6.40pm chat and set up for
7-9 pm Drawing.
Contact: Mary 0449767162
Members \$18 Non members \$20



Term I Jan 28-March 25,
(except Labour Day March 11) (8 weeks)
Term II April 15 – June 24 (11 weeks)
Term III July 15-Sept 16 (10 weeks)
Term IV Oct 7 – Dec 16 (11 weeks)
Cost \$18 members, \$20 non members
Time 6.30 – 9 pm

Artwork by
Yvette Wroby
11/2/13

Figurative Art Tuesdays

9.30- 3 Contact Yvette 0412030467
or Lilian 0402148909
Members \$42 Non Members \$50
Term I Jan 29 - March 19 (8 weeks)
Term II April 16 to June 25 (11 weeks)
Term III July 16 to Sept 17 (10 weeks)
Term IV Oct 8 – December 17
(excluding Cup Day) (10 weeks)
Cost \$42 members, \$50 non members
Tutor: Keming Shen



Art Work in progress
by Alex Hetrel 12/2/13

Monthly En Plein Air Now with Music

First Sunday of the month, Caulfield Park Bandstand. 10.30
-3 pm RSVP Angeline: 95788791 and leave a message. The
Dates will coincide with 3 Band Stand Concerts for Summer
2013. Art Materials for Children are supplied 1-3 pm, Live
Music 2-3 pm

3 March - classical singers
7 April - GE Band



Monthly Portraiture Group

Third Wednesday Of the Month, 10.30 coffee and chat,
sketching 11-1 Contact 0402349131 for rotating venue or to
add your name to the list. GEAS Members only. Host to
provide sitter, long poses of 40 mins planned for 2013

Peter Roccella's portrait
became birthday gift to the sitter Miriam
who kindly took 2 hours out of her
busy life to facilitate our Feb gathering



Further March Events @GEAS

March 3 Sunday En Plein Air with classical singers at the
Band Stand Caulfield Park. 10.30 am Angeline 95788791
Note this is a Joint event with Friends of the Park and Band
March 6 Wed Art Development Video: Pat Moran Learning
Classical Oil Painting Part One. 10.30-1 **Esther: 95230168**
March 7 Thurs 7.15 for 7.30 GEAS Committee Meeting
March 13 Wed Art Development Video: Pat Moran Learning
Classical Oil Painting Part Two. 10.30 -1 **Esther: 95230168**

Community Art Events:

By March 1, register for Artz Blitz March 1-2 Kingston Arts
March 2 Como House and Gardens artisan market. Nat. Trust
March 2-17 weekends only Herring Island Gallery, take
the punt from Como Park to the island, Mel Ref: 58G2
<http://www.Contemporary Art Society of Victoria.org.au>
til March 3 The Kenneth Jack View, Bayside Arts and
Cultural Centre Brighton Town Hall cnr Carpenter St and
Wilson St, enter Wilson St Open Wed-Fri 11-5, Sat Sun 1-5
March 6- 23 invitation to Opening at Artman Gallery 635A
Glenhuntly Rd Caulfield South Hours Wed-Sat 11-4 RSVP
til March 17 NGV international Radiance; Neo impressionists
til March 15 Art Walkabout, 51 Grey St, St Kilda. Off street
parking available; at Alliance Francaise de Melbourne
by March 25 enroll for Prahran Art Town and the experience
of working en plein air as part of another Art Community.
Contact Margaret Kernich <mkfashbash@optusnet.com.au>

Glenhuntly Plaza as a Cultural Precinct



Cr Mary Delahunty participates in
special En Plein Air Day.

Saturday February 9th saw 15
artists p Painting En Plein Air
at Glenhuntly Plaza to
demonstrate the use of the
area as an Arts and Cultural
Precinct, in line with plans to
redevelop the area. Artists
included: Yvette Wroby,
Manwel Cassar, Victor
Appleton, Gillian Schofield,
Peter Edgeley, Colin
Bellingham and friend
Peter, Kerrin
Edmunds, Brenda Chan and
friends Lorraine and Joanne,
Esther Lewis, Heather Welsh,
Lilian Weinberg, Kylie
Castan, Sara
Longwood, Penny Sennitt
and Councillor Mary
Delahunty.

Proudly supported by

Caulfield Park
Community Bank®
Branch

193 Balaclava Road, Caulfield
Phone 03 9525 9899



Our thanks go to
The Caulfield Park
Community Bank
Branch of the
Bendigo Bank for
their ongoing
support of our
initiatives and
activities.



Manwel Cassar painting at Glenhuntly Plaza.



Manwel and family enjoy Drop By Drawing at the NGV



Feb 3 Sunday En Plein Air The first en plein air for 2013 was held in conjunction with "Friends of Caulfield Park". This was a great success as the sunshine and the band brought the families to the park in the afternoon. It was attended by GEAS members Yvette Wroby, Sara Longwood, Brenda Chan and Angeline Bartholomewsz and new artist Penny Sennit. The children's painting and drawing session attracted a number of families and the young children joined in to create their own masterpieces. Thanks go to Lisa Di Marco from 'Friends of Caulfield Park' for organising visits from David Southwick, MP, Elizabeth Miller, MP and Jamie Hyams, Mayor, Glen Eira.

Art En Plein Air is to be continued this Sunday March 3 at 10.30 am with Children's drawing and Classical Singers at the Bandstand 2-3 pm organised by Friends of Caulfield Park



Herring Island Gallery Exhibition

March 2-17 weekends only Herring Island Gallery, take the punt from Como Landing to the island, Mel Ref: 58G2 <http://www.ContemporaryArtSocietyofVictoria.org.au>; 7th Exhibition of the Contemporary Art Society of Victoria. Opening Saturday 2 March, 12 noon to 2pm. Herring Island is in the middle of the Yarra River, 3km from the city. Exhibiting artists available for discussion. Transport from Como Landing to the Island service operates between 11am and 5pm. Punt charges: \$2 per person or \$5 per family, with pensioners, unemployed and children under 12 free. Car parking is available in Alexandra Ave.. Images on line at end of Exhibit: See related websites: <http://www.contemporaryartsociety.org.au/exhibitions/HISAF/HISAF.html> <http://www.herringislandfestival.org.au/> <http://parkweb.vic.gov.au/explore/parks/herring-island>

Forthcoming Events:



'Wonderful Obsessions'

Yvette Wroby
FOOTY ART
Exhibition
April 4-14

Opening April 4 at 7pm

261 Hawthorn Rd
Caulfield
hrs: 11-8 or
by appointment
0412030467

Exhibition Opportunities with Glen Eira Artists Society



GEAS Exhibition Glen Eira City Council Annexe Dec 2012 will be repeated Dec 2-15, 2013 with our Paint in the Park Day Exhibition providing members with opportunity to exhibit.

This Exhibition Opportunity is complemented by the online opportunities offered by Glen Eira Artists Society. To place 20 images online contact Gillian 0402349131 for photos of your folio, or send images direct to: peter@roccella.com.au

Murrumbeena Market with Rotary April 13

explore the Art/Craft on sale or join the GEAS artists' stand for children or demonstrate your medium en plein air in the courtyard. Contact glenart2@gmail.com for bookings or liaise with Gillian 0402349131

GEAS Members Sharing Art News:

Thank you Heather, Brenda, Jan and Peter E

Mark Ewson "Fabric Layerism" collage and link to Galleries and interviews: www.markewenson-artist.com; www.theartandthecurious.com.au

Marc Allante It's an artist's journey from age 2 to 25, link: <http://imgur.com/a/1oZv1?gallery>; And this is his gallery today: <http://www.marcallante.com/>

Stuart Shils Weekly online interviews with global artists in all mediums, by Deborah Blakeley 0407147953



Current In Conversation
Stuart Shils

<http://www.zoneonearts.com.au>
dBlakeley@zoneonearts.com.au

The Kenneth Jack View, Bayside Arts and Cultural Centre Brighton Town Hall cnr Carpenter St and Wilson St, enter Wilson St Open til March 3 Open Wed-Fri 11-5, Sat Sun 1-5. Brenda reports there is a Fabulous 45 Min Video

at the exhibition that is well worth the viewing. A journey through the beauty and variety of Australia... Jack was unofficial war artist, housed at Australian War Memorial, a Watercolourist and Master Printmaker, C.I.T teacher, who valued drawing, figurative art, realism traditional perspectives at a time of abstract expressionism elsewhere.

Collective Momentum studio 106 artists exhibit at St Kilda Town Hall Gallery til March 13, 8.30-5

Forthcoming Turner Exhibition, South Australia with Turner style painting to music of his times on April 8 by renowned Turner specialist Australian watercolourist Tony Smibert. Exhibition will also go to Canberra.

The Warrandyte Festival Art Prize:

artprize@warrandytefestival.org
Applications close Friday March 22

Invitation to Opening from Local Gallery Artman

Wednesday 6th March from 6 – 8pm, artist and art educator John Wahn Kzywokulski to open exhibition:

March 6-23 Artman Gallery showcases two artists. Firstly Hele Ellis *Jubilee*, a solo exhibition of her signature use of texture and colour intensity investigating notions of renewal: the cyclical nature of life, and the tension and opposition of the colour circle - ethereal understandings.



Hele Ellis Jubilee



Cath Johnston Recent Works

Secondly Cath Johnston *Recent Works*: sculpture using techniques of repetition and scale to highlight experiences of the modern world and contemporary human condition. Her idiosyncratic and challenging humour invites the viewer to connect with the interactivity & tactility of the sculptural form.

Creative People Live Longer

Breakthrough Study Tells You Why



Creative People Live Longer: “Open Mind, Longer Life” a study published in the June edition of the Journal of Aging and Health confirms that creativity is protective of health because it maintains the integrity of the neural pathways and the robustness of the white matter supporting connections between neurons in different parts of the brain. Evidence from the study 1990-2008 shows that creative people live longer, suggesting creative thinking techniques could improve health by lowering stress and exercising the brain reduces stress and keeps the brain healthy

‘Be Mindful’ in all that you do. Thank you Esther.

Fostering Creativity

Likewise, to foster creativity well known author of “Drawing on the Right Side of the Brain” Betty Edwards advocates alternating visual and verbal activities to enhance both the Right and Left capacities of the brain, intuitive and logical... and mindful.... Interpreted from the Source: Edwards, Betty, (1987) Drawing on the Artist Within

Tonal Study Exercises:

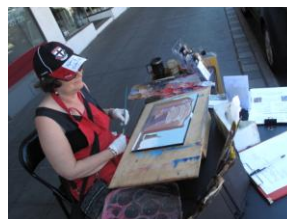
As we progress as a society, share stories, chat over meals, between drawing and painting sessions, I never cease to be amazed by the depth of knowledge of members in matters Art-related. LIGHT is the biggest factor in establishing your drawing or painting and for this you need Tone: awareness of light and dark, warm and cool (colours) and soft and sharp edges. Here are some tonal exercises suggested by GEAS members and participants. Thankyou Esther and Geoffrey, 12/2/13:

- ❖ Using a black pen draw a portrait or a scene using only black dots. The more the dots the darker the picture. The process establishes the tonal range, the outcome looks fantastic.
- ❖ Tear up newspaper and use the tonal values of the newspaper to make a picture, eg a figure
- ❖ With black and white paint, mix first three (and later five) shades of grey. Use the premix to paint your picture in black white and 3-5 shades of grey. [Julian Ashton’s School of Art insisted on 2-3 years of tonal work before moving on to colour]
- ❖ Spread charcoal over paper then use an eraser to lift out the light tones for your picture
- ❖ Use black and white soft pastels or acrylics on coloured paper to create your darks and your lights in a picture
- ❖ Light your object or person with a strong directional light for life drawing or still life. Cut out other light sources for a clearer image to work with.

Glen Eira Artists Society gratefully acknowledges the support and assistance of the Rotary Club of Caulfield



Rotary Club of Caulfield Inc
service above self



Yvette Wroby envisaging a potential home for our society. Feb 9



Yvette also contributed the painting above left as First Prize in the Raffle for the Rotary Masked Tea Dance. Masks donated by Gillian.