



Glen Eira Artists Society

Newsletter, February 2013

2013 DATES

Life Drawing Mondays

6.30pm set up for
7-9 pm Drawing.

Contact:

Mary 0449767162

Members \$18

Non members \$20

Art by Mary Neighbour 28/5/12

Term I Jan 28-March 25,

(except Labour Day March 11) (8 weeks)

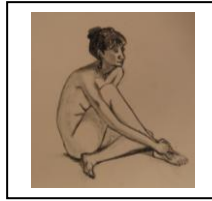
Term II April 15 – June 24 (11 weeks)

Term III July 15-Sept 16 (10 weeks)

Term IV Oct 7 – Dec 16 (11 weeks)

Cost \$18 members, \$20 non members

Time 6.30 – 9 pm



Figurative Art Tuesdays

9.30- 3 Contact Lilian 0402 148 909

Members \$42 Non Members \$50

Term I Jan 29 - March 19 (8 weeks)

Term II April 16 to June 25 (11 weeks)

Term III July 16 to Sept 17 (10 weeks)

Term IV Oct 8 – December 17

(excluding Cup Day) (10 weeks)

Cost \$42 members, \$50 non members



Monthly En Plein Air Now with Music

First Sunday of the month, traditionally held at Caulfield Park. It is essential you inform GEAS of your intention to participate on the day. Contact Angeline: 0401389032 or angeline.b@mcri.edu.au. The Dates will coincide with 3 Band Stand Concerts for Summer 2013 and Art Materials for Children on the day will be supplied by Yvette:

3 Feb - GE Band

3 March - classical singers

7 April - GE Band



Monthly Portraiture Group

Third Wednesday Of the Month.

Jan 23 was the first session for the

year and took place at Lilian's

10.30 coffee and chat, sketching 11-1

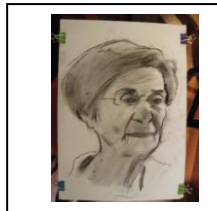
Contact 0402349131 for rotating venue

or to add your name to the list. GEAS

Members only. Host to provide sitter,

long poses of 40 mins planned for 2013

sessions of portraiture group



Committee 2013 President Yvette Wroby, VP Sara Longwood, Secretary Angeline Bartholomeusz, Treasurer Regina Atzil, Past President and Co-ordinator Fig Art Lilian Weinberg, Website Peter Roccella, Life Drawing Coordinator Mary Neighbour, e-News Editor Gillian Schofield, En Plein Air Angeline Bartholomeusz, General Committee Member Esther Lewis.

Not to be Missed Events @GEAS

Feb 3 Sunday En Plein Air with Band at the Band Stand Caulfield Park. 11 am Contact Angeline 95788791

Feb 9 Special Saturday En Plein Air at Elsternwick Plaza 10 am. Goal: to draw how we can see using the space for submission to Council. Contact Angeline 95788791

A Word from our Rotary Administrator

When reading the GEAS E-News please remember that this Society was established by the Rotary Club of Caulfield as a cultural project and continues to be nurtured by the Club.

In case any of you who are not members of the Club are wondering why there aren't any art competitions etc., that is a deliberate policy. Why? Because this Society is about encouraging creative collaboration and companionship and the development of unique and distinctive artistic styles-not about pitting artists against each other. There are many external competitions which the artists can enter-there just won't be any within this atelier style Society.

The Club's approach had its genesis in the concepts underpinning La Ruche De Montparnasse in Paris, France. It will be a long while before the French scenario can be emulated, but after only three years the Society has made a remarkable start, recently welcoming its 40th member-all of them experienced and exhibiting artists.

Heather Welsh
Co-ordinator, Special Projects
Rotary Club of Caulfield Inc.



Rotary support for GEAS Paint in the Park Day 2012

February Activities

- Feb 3 Sunday En Plein Air** with Band at the Band Stand Caulfield Park. 11 am Contact Angeline 95788791
- Feb 3 Rotary Masked Tea Dance** 12-4 sketching the masks, the participants and the environment
- Feb 6 Wednesday Life Story** 12.30 Pamela Irving talks at Glen Eira City Council Gallery RSVP Diane Soumilas 95243402 A 30-year life story including Pamela's latest commission for the Lunar Park Centenary
- Feb 9 Saturday En Plein Air** at Elsternwick Plaza Park, next to the former Riffle range building Contact: Angeline 0401389032
- Feb 10, 17 & 24, 1-5pm Drop-by Drawing with Music** at the NGV International, 180 St Kilda Road ngv.vic.gov.au See Neo-Impressionist Exhib.
- Feb 5-24 "Healing the Bay"** by the Planetary Healing Artists, opening 6-8pm, 5th February at Gasworks 21 Graham St Albert Park . Opening hours 9-4
- Feb 16 Sat Workshop with Katherine Hattam** www.artmasterclass.com.au
- Feb 17 Sid Nolan Talk** St Kilda Hist. Soc. 2.45pm at 150 Carlisle St, St Kilda

A Note from our Inaugural Facilitator & Mentor

Colin Johnson helped establish early goals for our society

Greetings!

I do trust that this finds you fit and well.

Thank you for the email and attachment - you must be thrilled with the positive development of the GEAS.

Please convey to Lilian my congratulations upon such a progressive and enthusiastic leadership as the inaugural President.

Congratulations are certainly due to Mary Neighbour and Gillian for the exceptional quality of the News Letter.

I do wish all members and you in particular a most successful year of Art commitment within the community.

With sincere best wishes,

Colin.

COLIN R. JOHNSON
JOHNSON FINE ART

Sharing your Art News

Thank you Nita Jawary for your ongoing enrichment of this e-news by identifying:

NGV Drop By Drawing ngv.vic.gov.au Jan -Feb 2013

Drawn at ACCA, Wed 6-8 pm 27/2,8/5, 26/6,25/9,20/11

Booking essential: 9697 9999; programs@accaonline.org.au

Melb Art Network: melbourneartnetwork.com.au

Members, please remember to let us know where and when you are exhibiting or any special information which can be shared with fellow members of the Society.

Heather

Administrator, GEAS



First Drop By Drawing NGV Jan 6, 2013

gleneiraartistsociety.org – phone 0402 349 131 or 0412 030 467 – email info@gleneiraartistsociety.org

GEAS Art Development dates tbn

Following AGM discussion of an Art Development component to GEAS Activities for 2013, attached is a list of activities. Comments to editor: gbschofi@optusnet.com.au

- **Feb 9: Elsternwick Plaza En Plein Air 10am**
- **March: Neo-Impressionist Exhib NGV**
- **April: Yvette Wroby Exhib:** 621 Hawthorn Rd
- **May:** Meet with Passion for Paint Group for social networking and shared activities Thurs
- **June:** Art Techniques Educational Video and informal gathering at Esther Lewis'
- **July:** Guest speaker: suggestions welcome eg Colin Johnson; Geoff (artist flyers)
- **August:** Workshop with Peter Edgeley: on-line sales of archival digital prints of photographs of paintings, use of embossing, R2400 printer and more. See www.labyrinth.net.au/~petere/archive; Ph 03 9866 6620; Mob 0409 189 257
- **Sept:** Workshop How to Set up your own website of images Explore Blogspot to link to your images on the GEAS website
- **Oct:** Working group for Paint in the Park 2013
- **Nov:** Paint in the Park 2013: practise planning your work on site throughout the year with our en plein air on the first Sunday of every month.
- **Dec:** Exhibition Glen Eira City Council Gallery

Young at Art

We thank all participants for their involvement in Young at Art 2012 and applaud the success of all the artists involved both residents and visiting artists. We are currently re-assessing our involvement in this project as we search for sustainable structures to promote this initiative. Top Arts funding has ended. NGV is looking for other initiatives: Young at heArt...? Would this provide a top down filter rather than bottom up?

Art Practices for Developing a Visual Memory

Drawing from memory Nature's forms is a good discipline in looking well and recording quickly to develop an intuitive perception.

Overnight Art For anyone with a quick hand, the frenetic 24 hr Art Blitz at the Kingston Arts' Centre Competition application closes Feb 8 or when full. There are 3 categories of visual arts and creative writing: 2D, 3D and writing based on a visual piece. <http://www.kingstonarts.com.au/visual-arts/exhibitions/artz-blitz-2013>. Mystery topic revealed 5 pm March 1st. Art to be delivered 5-6 pm, Saturday March 2



Fourth Drop By Drawing NGV Jan 27, 2013